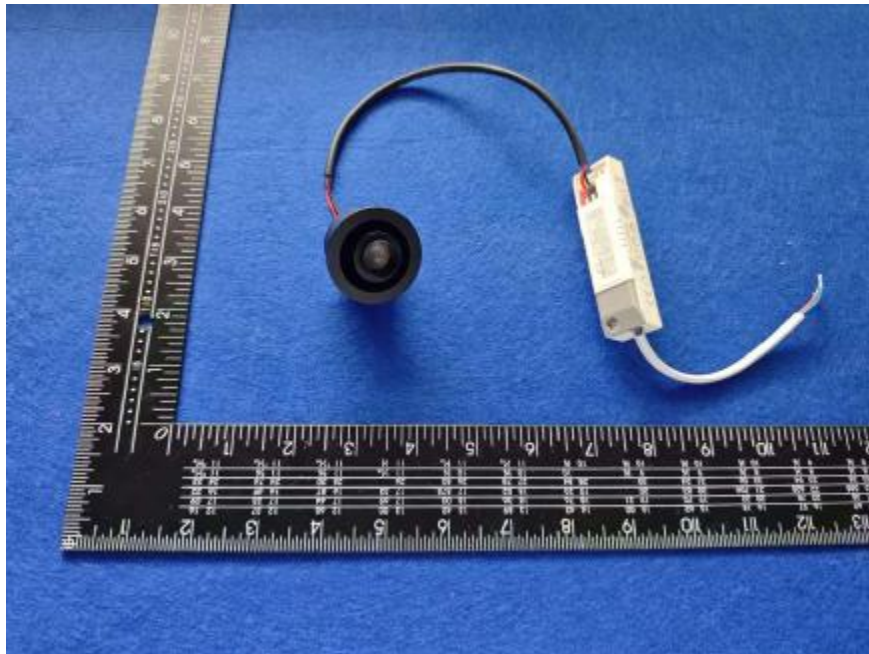


Luminaire Photograph



Light Output Ratio:	100.0%	
Luminaire Power:	3.05 W	
SHR Nominal:	0.00	Calculated using the TM5
SHR Maximum:	0.30	fine grid method.

C Range: 0 - 360DEG
C Interval: 30.0DEG
Test Speed: MEDIUM
Temperature: 25.3 °C
Operators: zoe
Test Date: 2025-7-15

Range: 0 - 180DEG
Interval: 0.5DEG
Test System: EVERFINE GO-SPEX500_V1 SYSTEM V2.00.461
Humidity: 65.0%
Test Distance: 3.160m [K=1.0000]
Remarks: LAMP: BXRE-30G-11H-3A1-00-0-0 Ra: 90
LENS: HLTJ00039 15R
DRIVER: LS-3-700 SIE 700mA
30minutes warm-up

LUMINOUS INTENSITY DISTRIBUTION DIAGRAM

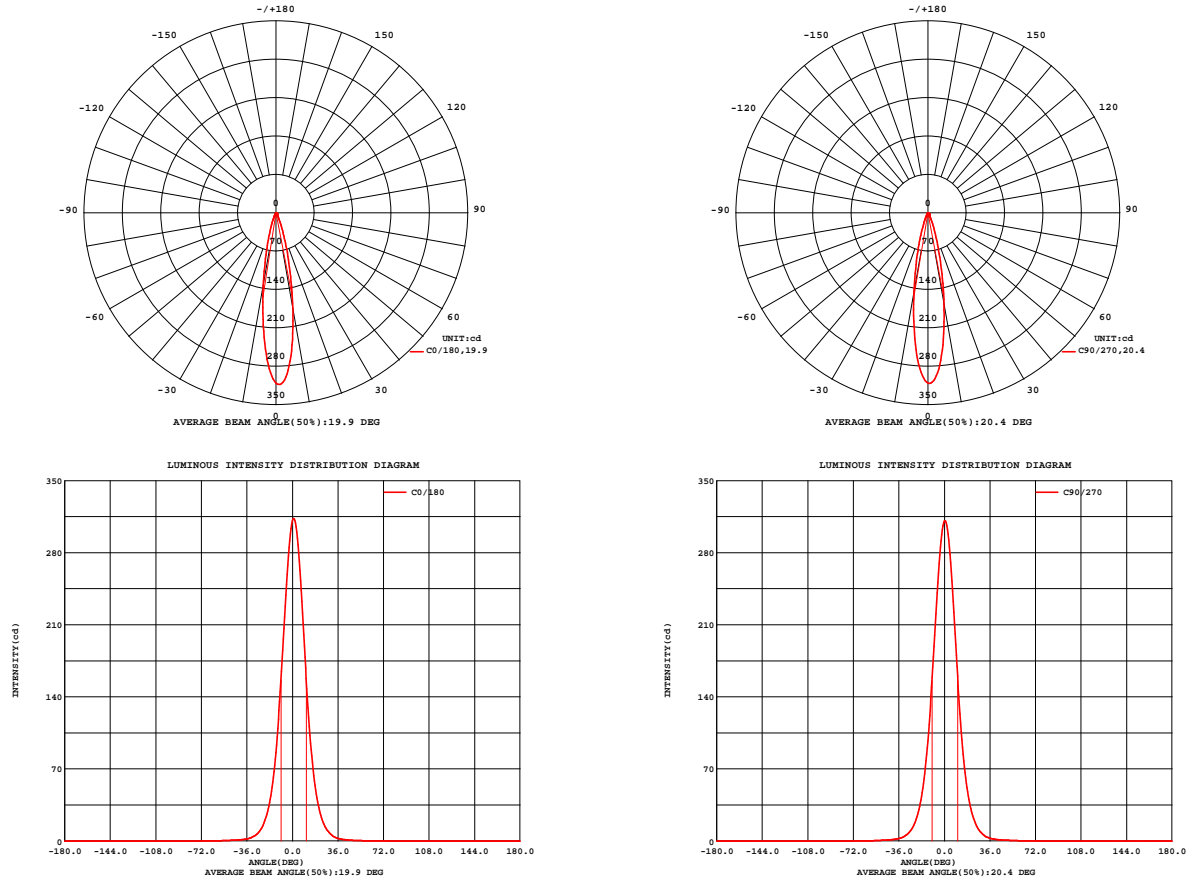


Fig. C0/C180

Fig. C90/C270

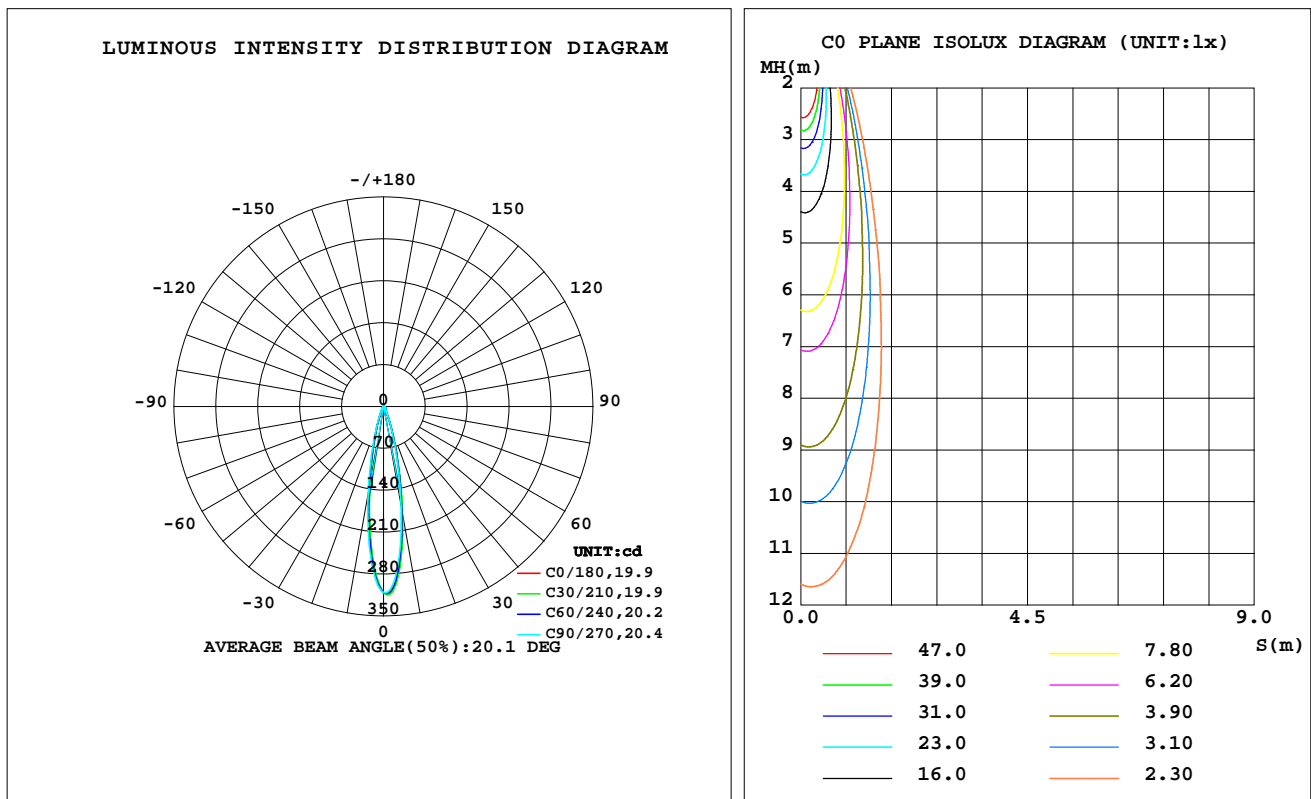
C Range: 0 - 360DEG
C Interval: 30.0DEG
Test Speed: MEDIUM
Temperature: 25.3 °C
Operators: zoe
Test Date: 2025-7-15

Range: 0 - 180DEG
Interval: 0.5DEG
Test System: EVERFINE GO-SPEX500_V1 SYSTEM V2.00.461
Humidity: 65.0%
Test Distance: 3.160m [K=1.0000]
Remarks: LAMP: BXRE-30G-11H-3A1-00-0-0 Ra: 90
LENS: HLTJ00039 15R
DRIVER: LS-3-700 SIE 700mA
30minutes warm-up

LUMINAIRE PHOTOMETRIC TEST REPORT

Test:U:220.13V I:0.0234A P:3.0499W PF:0.5848 Freq:49.99Hz Lamp Flux:52.9577x1 lm		
NAME: 2368.100Z	TYPE:	WEIGHT:
SPEC.: 3000K	DIM.:	SERIAL No.: 2507150469
MFR.: RISE	SUR.: 0.00011304m2	Shielding Angle:

DATA OF LAMP		PHOTOMETRIC DATA Eff: 17.36 lm/W			
MODEL	Bridgelux	Imax(cd)	314.6	S/MH(C0/180)	0.31
NOMINAL POWER(W)	3	LOR(%)	100.0	S/MH(C90/270)	0.33
RATED VOLTAGE(V)	220	TOTAL FLUX(lm)	52.958	UP,DN(C0-180)	0.0,53.1
NOMINAL FLUX(lm)	52.9577	CIE CLASS	DIRECT	UP,DN(C180-360)	0.0,46.9
LAMPS INSIDE	1	up(%)	0.0	CIBSE SHR NOM	0.00
TEST VOLTAGE(V)	220	down(%)	100.0	CIBSE SHR MAX	0.30



C Range: 0 - 360DEG
C Interval: 30.0DEG
Test Speed: MEDIUM
Temperature:25.3℃
Operators:zoe
Test Date:2025-7-15

Range: 0 - 180DEG
Interval: 0.5DEG
Test System:EVERFINE GO-SPEX500_V1 SYSTEM V2.00.461
Humidity:65.0%
Test Distance:3.160m [K=1.0000]
Remarks: LAMP:BXRE-30G-11H-3A1-00-0-0 Ra:90
LENS:HLTJ00039 15R
DRIVER: LS-3-700 SIE 700mA
30minutes warm-up

ZONAL FLUX DIAGRAM

ZONAL FLUX DIAGRAM:

	C0	C45	C90	C135	C180	C225	C270	C315		zone	total	%lum,lamp
10	178.5	180.4	169.7	148.2	135.5	136.5	149.5	166.9	0- 10	21.39	21.39	40.4,40.4
20	38.34	39.30	37.12	30.83	26.25	26.35	30.69	35.11	10- 20	21.60	42.99	81.2,81.2
30	6.909	7.126	6.921	5.751	4.734	4.831	5.734	6.418	20- 30	6.953	49.94	94.3,94.3
40	1.545	1.627	1.657	1.429	1.276	1.392	1.500	1.503	30- 40	1.908	51.85	97.9,97.9
50	0.5071	0.5391	0.6737	0.6017	0.5681	0.6155	0.6145	0.5980	40- 50	0.7240	52.57	99.3,99.3
60	0.1653	0.1766	0.2283	0.1651	0.1144	0.1126	0.1242	0.1704	50- 60	0.3264	52.90	99.9,99.9
70	0.0216	0.0225	0.0155	0.0111	0.0070	0.0044	0.0068	0.0148	60- 70	0.0543	52.96	100,100
80	0	0	0	0	0	0	0	0	70- 80	0.0021	52.96	100,100
90	0	0	0	0	0	0	0	0	80- 90	0	52.96	100,100
100	0	0	0	0	0	0	0	0	90-100	0	52.96	100,100
110	0	0	0	0	0	0	0	0	100-110	0	52.96	100,100
120	0	0	0	0	0	0	0	0	110-120	0	52.96	100,100
130	0	0	0	0	0	0	0	0	120-130	0	52.96	100,100
140	0	0	0	0	0	0	0	0	130-140	0	52.96	100,100
150	0	0	0	0	0	0	0	0	140-150	0	52.96	100,100
160	0	0	0	0	0	0	0	0	150-160	0	52.96	100,100
170	0	0	0	0	0	0	0	0	160-170	0	52.96	100,100
180	0	0	0	0	0	0	0	0	170-180	0	52.96	100,100
DEG	LUMINOUS INTENSITY:cd									UNIT:lm		

C Range: 0 - 360DEG
 C Interval: 30.0DEG
 Test Speed: MEDIUM
 Temperature:25.3℃
 Operators:zoe
 Test Date:2025-7-15

Range: 0 - 180DEG
 Interval: 0.5DEG
 Test System:EVERFINE GO-SPEX500_V1 SYSTEM V2.00.461
 Humidity:65.0%
 Test Distance:3.160m [K=1.0000]
 Remarks: LAMP:BXRE-30G-11H-3A1-00-0-0 Ra:90
 LENS:HLTJ00039 15R
 DRIVER: LS-3-700 SIE 700mA
 30minutes warm-up

LUMINANCE LIMITATION CURVES

Test:U:220.13V I:0.0234A P:3.0499W PF:0.5848 Freq:49.99Hz
Lamp Flux:52.9577x1 lm

NAME: 2368.100Z

TYPE:

WEIGHT:

SPEC.: 3000K

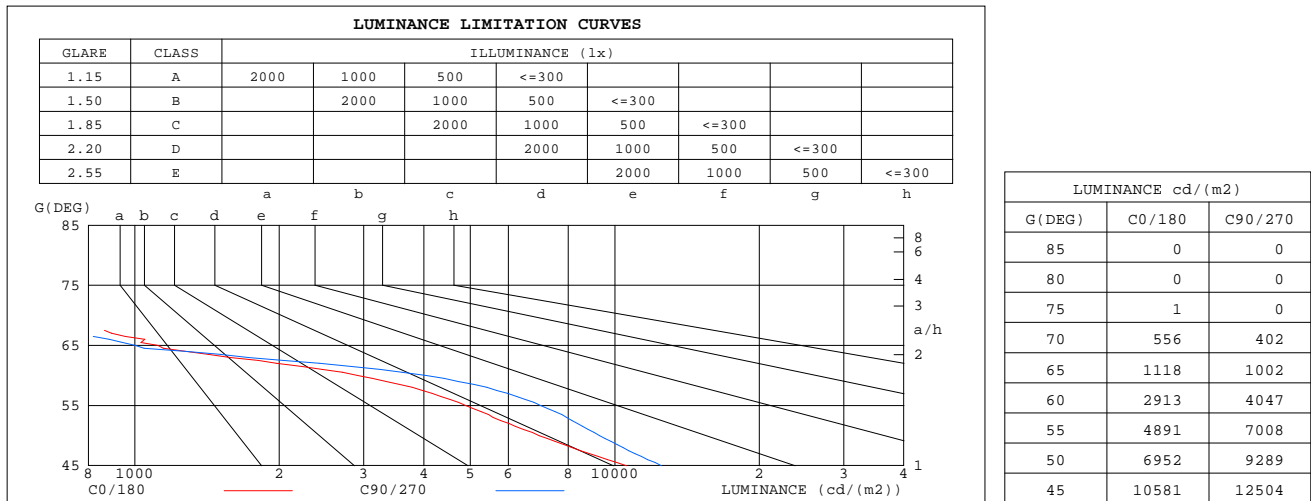
DIM.:

SERIAL No.: 2507150469

MFR.: RISE

SUR.: 0.00011304m2

Shielding Angle:



C Range: 0 - 360DEG
C Interval: 30.0DEG
Test Speed: MEDIUM
Temperature:25.3℃
Operators:zoe
Test Date:2025-7-15

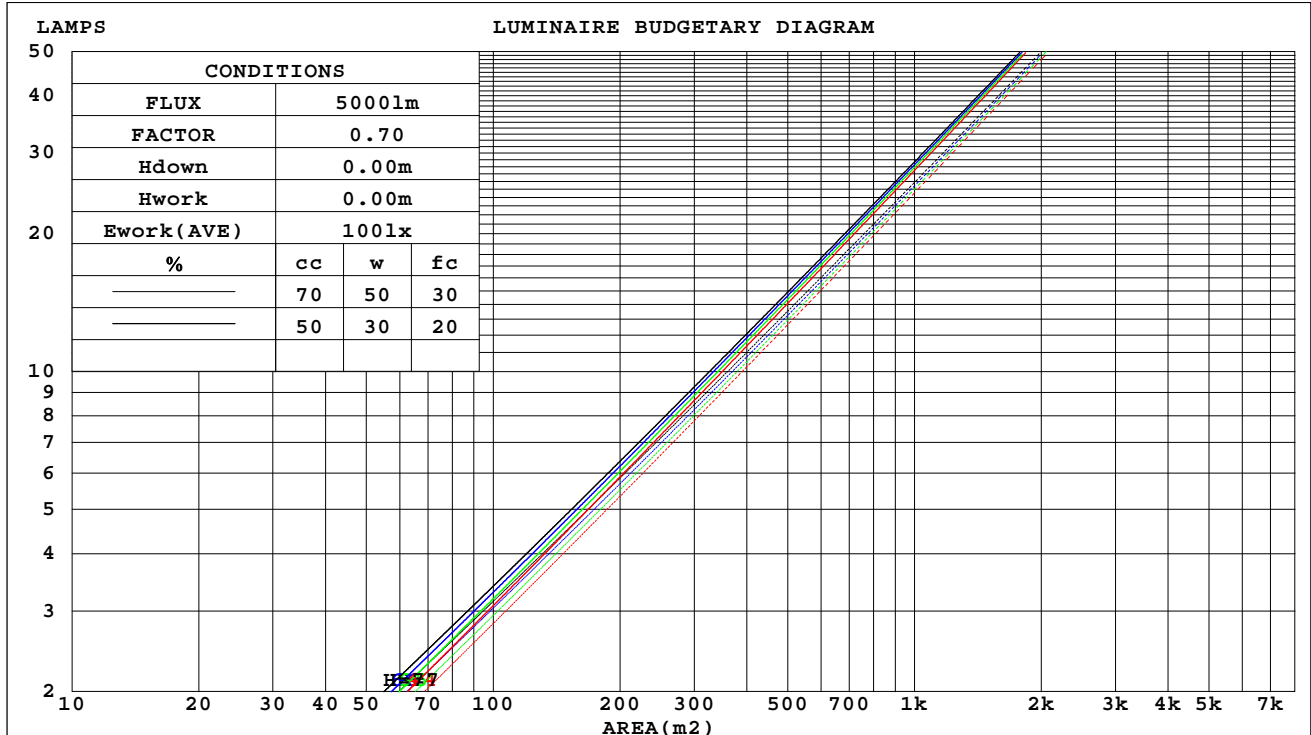
Range: 0 - 180DEG
Interval: 0.5DEG
Test System:EVERFINE GO-SPEX500_V1 SYSTEM V2.00.461
Humidity:65.0%
Test Distance:3.160m [K=1.0000]
Remarks: LAMP:BXRE-30G-11H-3A1-00-0-0 Ra:90
LENS:HLTJ00039 15R
DRIVER: LS-3-700 SIE 700mA
30minutes warm-up

CU AND LUMINAIRE BUDGETARY ESTIMATE DIAGRAM

Test:U:220.13V I:0.0234A P:3.0499W PF:0.5848 Freq:49.99Hz
Lamp Flux:52.9577x1 lm

NAME: 2368.100Z	TYPE:	WEIGHT:
SPEC.: 3000K	DIM.:	SERIAL No.: 2507150469
MFR.: RISE	SUR.: 0.00011304m2	Shielding Angle:

cc	80%			70%			50%			30%			10%			0
w	50%	30%	10%	50%	30%	10%	50%	30%	10%	50%	30%	10%	50%	30%	10%	0
fc	20%			20%			20%			20%			20%			0
RCR	RCR:Room Cavity Ratio															



C Range: 0 - 360DEG
C Interval: 30.0DEG
Test Speed: MEDIUM
Temperature:25.3℃
Operators:zoe
Test Date:2025-7-15

Range: 0 - 180DEG
Interval: 0.5DEG
Test System:EVERFINE GO-SPEX500_V1 SYSTEM V2.00.461
Humidity:65.0%
Test Distance:3.160m [K=1.0000]
Remarks: LAMP:BXRE-30G-11H-3A1-00-0-0 Ra:90
LENS:HLTJ00039 15R
DRIVER: LS-3-700 SIE 700mA
30minutes warm-up

WEC AND CCEC

Test:U:220.13V I:0.0234A P:3.0499W PF:0.5848 Freq:49.99Hz Lamp Flux:52.9577x1 lm		
NAME: 2368.100Z	TYPE:	WEIGHT:
SPEC.: 3000K	DIM.:	SERIAL No.: 2507150469
MFR.: RISE	SUR.: 0.00011304m2	Shielding Angle:

cc	80%			70%			50%			30%			10%			0	
w	50%	30%	10%	50%	30%	10%	50%	30%	10%	50%	30%	10%	50%	30%	10%	0	
fc	20%			20%			20%			20%			20%			0	
RCR	RCR:Room Cavity Ratio						Wall Exitance Coefficients(WEC)										
0.0																	
1.0	.134	.076	.024	.127	.073	.023	.115	.066	.021	.104	.060	.019	.093	.054	.017		
2.0	.124	.068	.021	.119	.065	.020	.109	.060	.019	.099	.056	.017	.090	.051	.016		
3.0	.116	.062	.018	.111	.059	.018	.103	.056	.017	.095	.052	.016	.087	.048	.015		
4.0	.108	.056	.017	.104	.055	.016	.097	.052	.015	.091	.049	.015	.084	.046	.014		
5.0	.102	.052	.015	.099	.051	.015	.092	.048	.014	.087	.046	.014	.081	.044	.013		
6.0	.096	.048	.014	.093	.047	.014	.088	.045	.013	.083	.043	.013	.079	.041	.012		
7.0	.091	.045	.013	.089	.044	.013	.084	.043	.012	.080	.041	.012	.076	.039	.012		
8.0	.087	.042	.012	.085	.042	.012	.081	.040	.012	.077	.039	.011	.073	.038	.011		
9.0	.083	.040	.011	.081	.039	.011	.077	.038	.011	.074	.037	.011	.071	.036	.010		
10.0	.079	.038	.011	.078	.037	.010	.074	.036	.010	.072	.036	.010	.069	.035	.010		

cc	80%			70%			50%			30%			10%			0
w	50%	30%	10%	50%	30%	10%	50%	30%	10%	50%	30%	10%	50%	30%	10%	0
fc	20%			20%			20%			20%			20%			0
RCR	RCR:Room Cavity Ratio			Ceiling Cavity Exitance Coefficients(CCEC)												
0.0	.190	.190	.190	.163	.163	.163	.111	.111	.111	.064	.064	.064	.020	.020	.020	
1.0	.168	.158	.148	.144	.135	.128	.098	.093	.088	.057	.054	.051	.018	.017	.017	
2.0	.150	.133	.118	.128	.114	.102	.088	.079	.071	.051	.046	.042	.016	.015	.014	
3.0	.135	.113	.096	.116	.098	.083	.079	.068	.058	.046	.040	.034	.015	.013	.011	
4.0	.122	.098	.079	.105	.085	.069	.072	.059	.049	.042	.035	.029	.013	.011	.009	
5.0	.111	.085	.066	.096	.074	.058	.066	.052	.041	.038	.030	.024	.012	.010	.008	
6.0	.102	.075	.056	.088	.065	.049	.061	.046	.035	.035	.027	.021	.011	.009	.007	
7.0	.095	.067	.048	.082	.058	.042	.056	.041	.030	.033	.024	.018	.011	.008	.006	
8.0	.088	.060	.041	.076	.052	.036	.052	.037	.026	.031	.022	.015	.010	.007	.005	
9.0	.082	.055	.036	.071	.047	.031	.049	.033	.022	.029	.020	.013	.009	.006	.004	
10.0	.077	.050	.032	.067	.043	.028	.046	.030	.020	.027	.018	.012	.009	.006	.004	

C Range: 0 - 360DEG
C Interval: 30.0DEG
Test Speed: MEDIUM
Temperature:25.3℃
Operators:zoe
Test Date:2025-7-15

Range: 0 - 180DEG
Interval: 0.5DEG
Test System:EVERFINE GO-SPEX500_V1 SYSTEM V2.00.461
Humidity:65.0%
Test Distance:3.160m [K=1.0000]
Remarks: LAMP:BXRE-30G-11H-3A1-00-0-0 Ra:90
LENS:HLTJ00039 15R
DRIVER: LS-3-700 SIE 700mA
30minutes warm-up

UGR(Unified Glare Rating) Table

Test:U:220.13V I:0.0234A P:3.0499W PF:0.5848 Freq:49.99Hz Lamp Flux:52.9577x1 lm										
NAME: 2368.100Z					TYPE:			WEIGHT:		
SPEC.: 3000K					DIM.:			SERIAL No.: 2507150469		
MFR.: RISE					SUR.: 0.00011304m2			Shielding Angle:		
ceiling/cavity	0.7	0.7	0.5	0.5	0.3	0.7	0.7	0.5	0.5	0.3
walls	0.5	0.3	0.5	0.3	0.3	0.5	0.3	0.5	0.3	0.3
working plane	0.2	0.2	0.2	0.2	0.2	0.2	0.2	0.2	0.2	0.2
Room dimensions	Viewed crosswise					Viewed endwise				
x = 2H y = 2H	21.5	22.1	21.7	22.2	22.4	21.8	22.4	22.0	22.6	22.7
3H	21.3	21.9	21.6	22.1	22.3	21.7	22.3	21.9	22.5	22.6
4H	21.3	21.8	21.5	22.0	22.2	21.6	22.2	21.9	22.4	22.6
6H	21.2	21.7	21.5	21.9	22.2	21.5	22.1	21.8	22.3	22.5
8H	21.1	21.6	21.4	21.9	22.1	21.5	22.0	21.8	22.2	22.5
12H	21.1	21.6	21.4	21.8	22.1	21.4	21.9	21.7	22.2	22.5
4H 2H	21.3	21.9	21.6	22.1	22.3	21.7	22.2	21.9	22.4	22.6
3H	21.2	21.7	21.5	21.9	22.2	21.5	22.0	21.8	22.3	22.5
4H	21.1	21.5	21.4	21.8	22.1	21.4	21.9	21.7	22.2	22.5
6H	21.0	21.4	21.3	21.7	22.0	21.3	21.7	21.7	22.0	22.4
8H	20.9	21.3	21.3	21.6	22.0	21.3	21.6	21.6	22.0	22.3
12H	20.9	21.2	21.3	21.6	22.0	21.2	21.5	21.6	21.9	22.3
8H 4H	20.9	21.3	21.3	21.6	22.0	21.3	21.6	21.6	22.0	22.3
6H	20.8	21.1	21.2	21.5	21.9	21.1	21.5	21.6	21.8	22.3
8H	20.7	21.0	21.2	21.4	21.9	21.1	21.4	21.5	21.8	22.2
12H	20.7	20.9	21.1	21.4	21.8	21.0	21.3	21.5	21.7	22.2
12H 4H	20.9	21.2	21.3	21.6	22.0	21.2	21.5	21.6	21.9	22.3
6H	20.7	21.0	21.2	21.4	21.9	21.1	21.4	21.5	21.8	22.2
8H	20.7	20.9	21.1	21.4	21.8	21.0	21.3	21.5	21.7	22.2
Variations with the observer position at spacings(CIE Pub.117):										
S = 1.0H	+ 2.5 / - 5.5					+ 2.5 / - 4.2				
1.5H	+ 3.9 / - 3.3					+ 3.8 / - 3.5				
2.0H	+ 3.8 / - 6.8					+ 3.9 / - 8.2				

CIE Pub.117, 52.96 lm Total Lamp Luminous Flux Correct (8log(F/F0) = -10.2)
Area: 0.00011304 m2

C Range: 0 - 360DEG
C Interval: 30.0DEG
Test Speed: MEDIUM
Temperature:25.3℃
Operators:zoe
Test Date:2025-7-15

Range: 0 - 180DEG
Interval: 0.5DEG
Test System:EVERFINE GO-SPEX500_V1 SYSTEM V2.00.461
Humidity:65.0%
Test Distance:3.160m [K=1.0000]
Remarks: LAMP:BXRE-30G-11H-3A1-00-0-0 Ra:90
LENS:HLTJ00039 15R
DRIVER: LS-3-700 SIE 700mA
30minutes warm-up

UTILIZATION FACTORS TABLE

Test:U:220.13V I:0.0234A P:3.0499W PF:0.5848 Freq:49.99Hz Lamp Flux:52.9577x1 lm		
NAME: 2368.100Z	TYPE:	WEIGHT:
SPEC.: 3000K	DIM.:	SERIAL No.: 2507150469
MFR.: RISE	SUR.: 0.00011304m2	Shielding Angle:

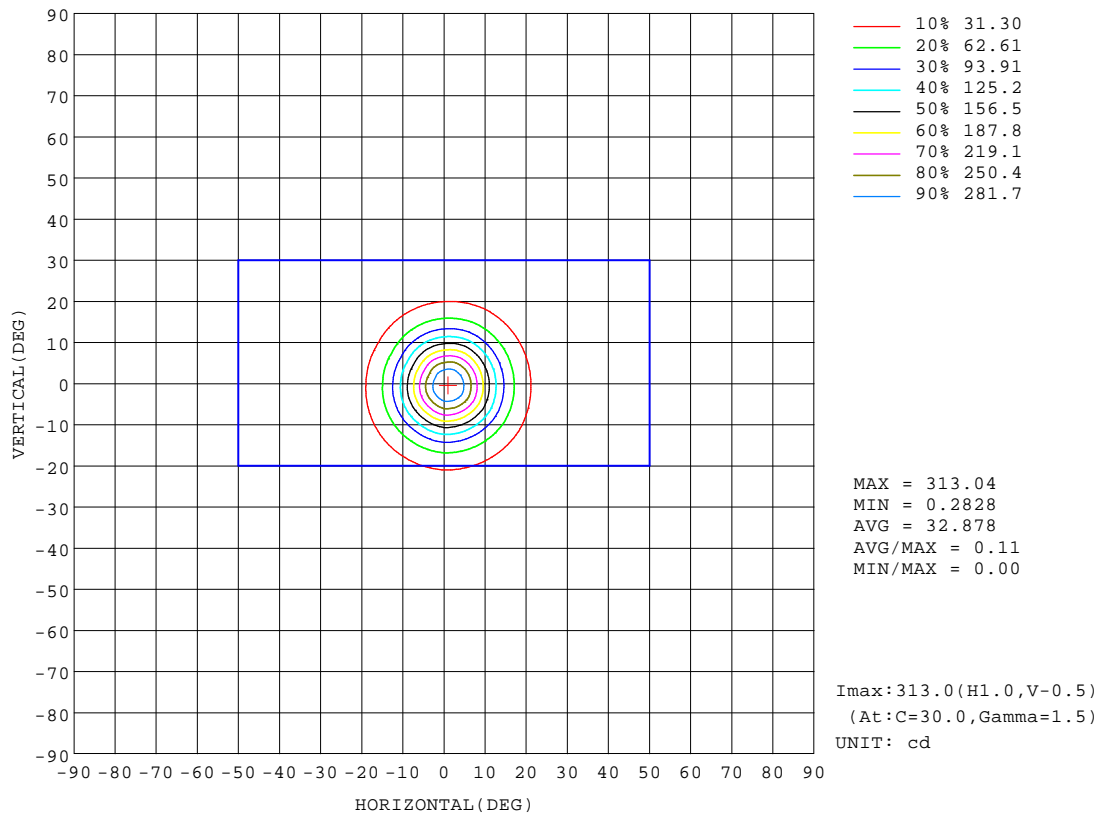
REFLECTANCE										
Ceiling	0.8	0.8	0.8	0.7	0.7	0.7	0.5	0.5	0.5	0
Walls	0.7	0.5	0.3	0.7	0.5	0.3	0.7	0.5	0.3	0
Working plane	0.2	0.2	0.2	0.2	0.2	0.2	0.2	0.2	0.2	0
ROOM INDEX	UTILIZATION FACTORS(PERCENT) $k(RI) \times RCR = 5$									
k = 0.60	90	84	81	90	84	81	89	84	81	77
0.80	97	92	89	97	92	88	96	91	88	85
1.00	101	96	93	100	96	93	99	95	92	88
1.25	105	100	97	104	100	97	102	98	96	92
1.50	107	103	100	106	102	100	104	101	98	94
2.00	110	106	103	108	105	102	106	103	101	96
2.50	111	108	105	110	106	104	107	104	102	96
3.00	113	109	107	111	108	106	107	105	104	97
4.00	114	112	110	112	110	108	109	107	106	99
5.00	116	114	112	113	112	110	110	108	107	100
ROOM INDEX	UF(total)									Direct
According to DIN EN 13032-2 2004			Suspended					SHRNOM = 1.25		

C Range: 0 - 360DEG
C Interval: 30.0DEG
Test Speed: MEDIUM
Temperature:25.3 °C
Operators:zoe
Test Date:2025-7-15

Range: 0 - 180DEG
Interval: 0.5DEG
Test System:EVERFINE GO-SPEX500_V1 SYSTEM V2.00.461
Humidity:65.0%
Test Distance:3.160m [K=1.0000]
Remarks: LAMP:BXRE-30G-11H-3A1-00-0-0 Ra:90
LENS:HLTJ00039 15R
DRIVER: LS-3-700 SIE 700mA
30minutes warm-up

ISOCANDELA DIAGRAM

Test:U:220.13V I:0.0234A P:3.0499W PF:0.5848 Freq:49.99Hz Lamp Flux:52.9577x1 lm		
NAME: 2368.100Z	TYPE:	WEIGHT:
SPEC.: 3000K	DIM.:	SERIAL No.: 2507150469
MFR.: RISE	SUR.: 0.00011304m2	Shielding Angle:

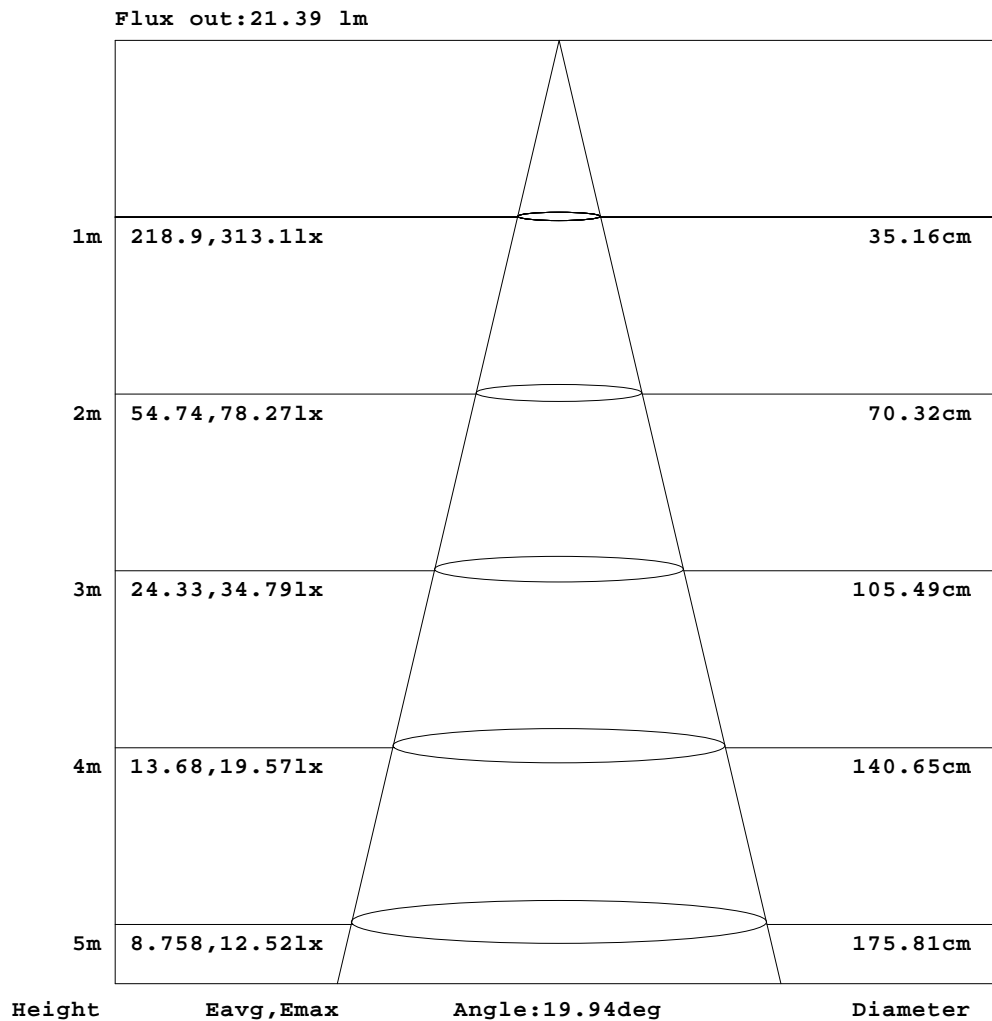


C Range: 0 - 360DEG
C Interval: 30.0DEG
Test Speed: MEDIUM
Temperature: 25.3 °C
Operators: zoe
Test Date: 2025-7-15

Range: 0 - 180DEG
Interval: 0.5DEG
Test System: EVERFINE GO-SPEX500_V1 SYSTEM V2.00.461
Humidity: 65.0%
Test Distance: 3.160m [K=1.0000]
Remarks: LAMP: BXRE-30G-11H-3A1-00-0-0 Ra: 90
LENS: HLTJ00039 15R
DRIVER: LS-3-700 SIE 700mA
30minutes warm-up

AAI Figure

Test:U:220.13V I:0.0234A P:3.0499W PF:0.5848 Freq:49.99Hz Lamp Flux:52.9577x1 lm		
NAME: 2368.100Z	TYPE:	WEIGHT:
SPEC.: 3000K	DIM.:	SERIAL No.: 2507150469
MFR.: RISE	SUR.: 0.00011304m2	Shielding Angle:



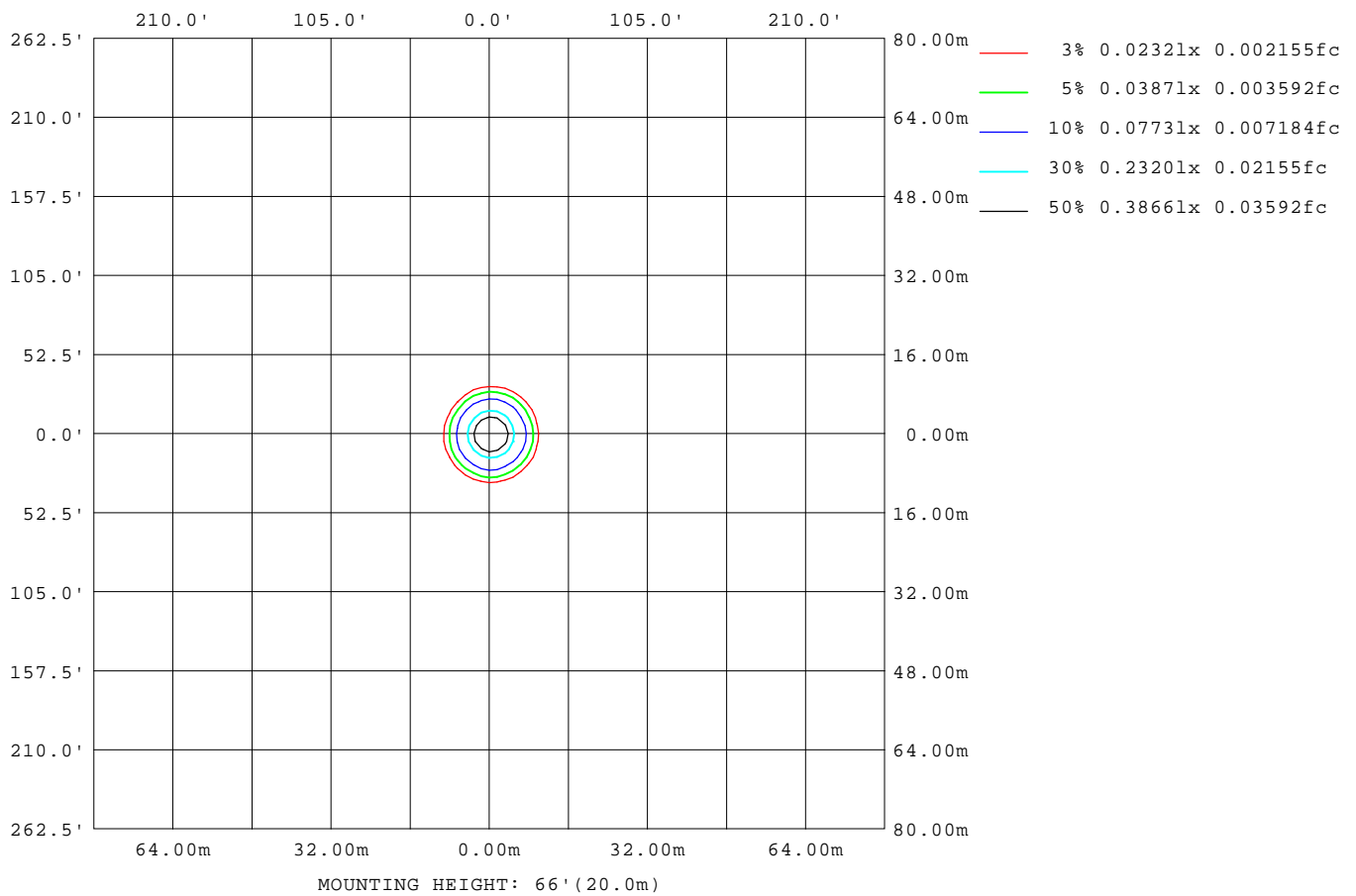
Note:The Curves indicate the illuminated area and the average illumination when the luminaire is at different distance.

C Range: 0 - 360DEG
C Interval: 30.0DEG
Test Speed: MEDIUM
Temperature:25.3℃
Operators:zoe
Test Date:2025-7-15

Range: 0 - 180DEG
Interval: 0.5DEG
Test System:EVERFINE GO-SPEX500_V1 SYSTEM V2.00.461
Humidity:65.0%
Test Distance:3.160m [K=1.0000]
Remarks: LAMP:BXRE-30G-11H-3A1-00-0-0 Ra:90
LENS:HLTJ00039 15R
DRIVER: LS-3-700 SIE 700mA
30minutes warm-up

ISOLUX DIAGRAM

Test:U:220.13V I:0.0234A P:3.0499W PF:0.5848 Freq:49.99Hz Lamp Flux:52.9577x1 lm		
NAME: 2368.100Z	TYPE:	WEIGHT:
SPEC.: 3000K	DIM.:	SERIAL No.: 2507150469
MFR.: RISE	SUR.: 0.00011304m2	Shielding Angle:



C Range: 0 - 360DEG
C Interval: 30.0DEG
Test Speed: MEDIUM
Temperature: 25.3 °C
Operators: zoe
Test Date: 2025-7-15

Range: 0 - 180DEG
Interval: 0.5DEG
Test System: EVERFINE GO-SPEX500_V1 SYSTEM V2.00.461
Humidity: 65.0%
Test Distance: 3.160m [K=1.0000]
Remarks: LAMP: BXRE-30G-11H-3A1-00-0-0 Ra: 90
LENS: HLTJ00039 15R
DRIVER: LS-3-700 SIE 700mA
30minutes warm-up

LED Avg.L Report

Test:U:220.13V I:0.0234A P:3.0499W PF:0.5848 Freq:49.99Hz Lamp Flux:52.9577x1 lm		
NAME: 2368.100Z	TYPE:	WEIGHT:
SPEC.: 3000K	DIM.:	SERIAL No.: 2507150469
MFR.: RISE	SUR.: 0.00011304m2	Shielding Angle:

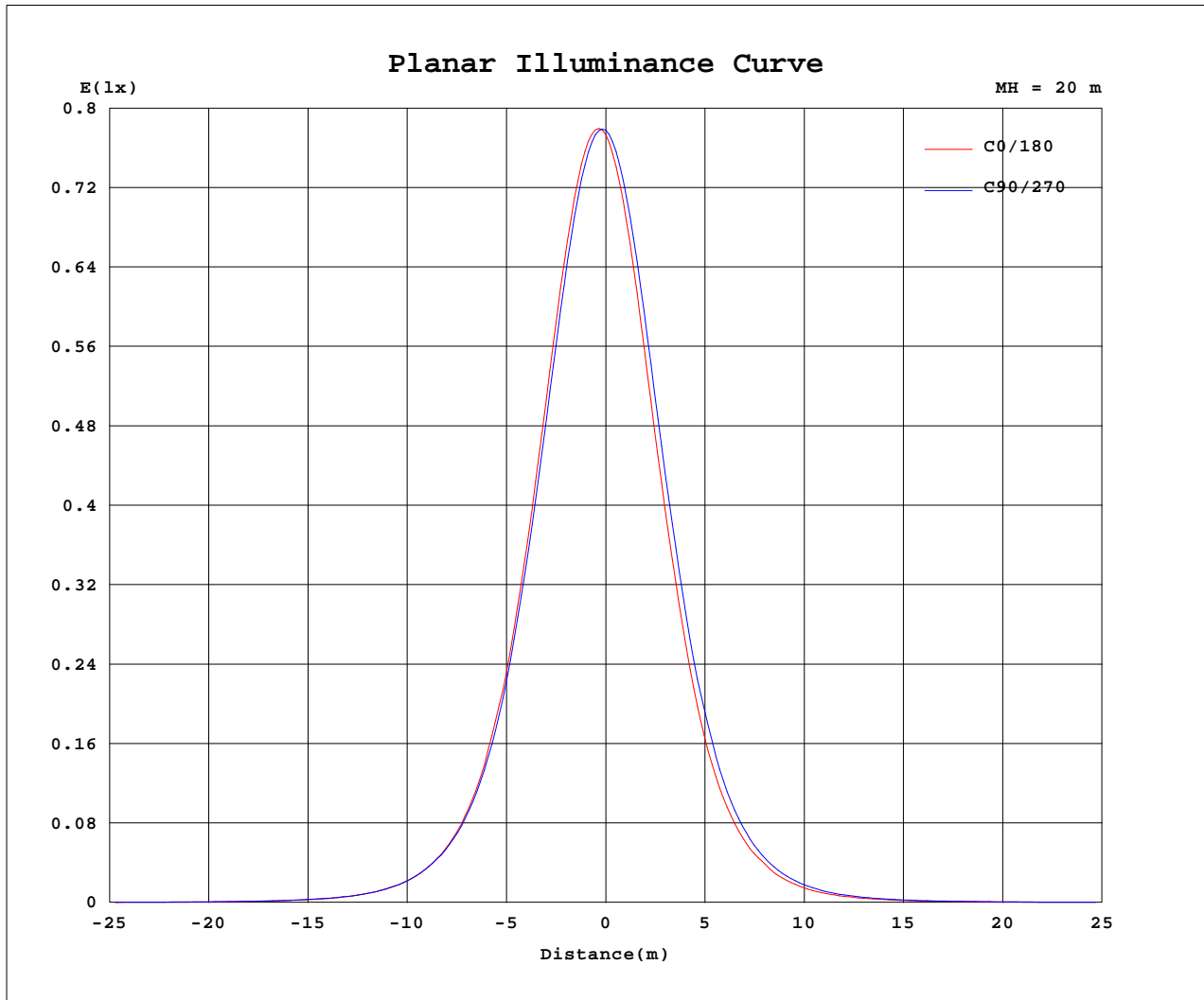
AvgL	cd/m2
L_0~180(65)av	909
L_0~180(75)av	1
L_0~180(85)av	0
L_90~270(65)av	881
L_90~270(75)av	0
L_90~270(85)av	0
L_45(65)av	901
L_45(75)av	0
L_45(85)av	0

Standard: GB/T 29293-2012

C Range: 0 - 360DEG
C Interval: 30.0DEG
Test Speed: MEDIUM
Temperature:25.3℃
Operators:zoe
Test Date:2025-7-15

Range: 0 - 180DEG
Interval: 0.5DEG
Test System:EVERFINE GO-SPEX500_V1 SYSTEM V2.00.461
Humidity:65.0%
Test Distance:3.160m [K=1.0000]
Remarks: LAMP:BXRE-30G-11H-3A1-00-0-0 Ra:90
LENS:HLTJ00039 15R
DRIVER: LS-3-700 SIE 700mA
30minutes warm-up

Planar Illuminance Curve



C Range: 0 - 360DEG
 C Interval: 30.0DEG
 Test Speed: MEDIUM
 Temperature: 25.3 °C
 Operators: zoe
 Test Date: 2025-7-15

Range: 0 - 180DEG
 Interval: 0.5DEG
 Test System: EVERFINE GO-SPEX500_V1 SYSTEM V2.00.461
 Humidity: 65.0%
 Test Distance: 3.160m [K=1.0000]
 Remarks: LAMP: BXRE-30G-11H-3A1-00-0-0 Ra: 90
 LENS: HLTJ00039 15R
 DRIVER: LS-3-700 SIE 700mA
 30minutes warm-up



LUMINOUS DISTRIBUTION INTENSITY DATA

Test:U:220.13V I:0.0234A P:3.0499W PF:0.5848 Freq:49.99Hz Lamp Flux:52.9577x1 lm		
NAME: 2368.100Z	TYPE:	WEIGHT:
SPEC.: 3000K	DIM.:	SERIAL No.: 2507150469
MFR.: RISE	SUR.: 0.00011304m2	Shielding Angle:

Table--1

UNIT: cd

C(DEG) (DEG)	0	30	60	90	120	150	180	210	240	270	300	330						
0	311	311	311	311	311	311	311	311	311	311	311	311						
5	280	285	277	270	255	246	239	235	244	251	265	272						
10	178	185	176	170	153	143	136	132	141	149	164	170						
15	88.8	91.9	88.3	84.0	75.1	67.4	62.0	59.6	65.0	72.0	79.1	84.3						
20	38.3	40.2	38.4	37.1	32.5	29.2	26.3	25.0	27.7	30.7	34.3	35.9						
25	16.2	17.2	16.4	15.9	14.0	12.3	11.0	10.4	11.6	13.0	14.5	15.2						
30	6.91	7.19	7.06	6.92	6.17	5.33	4.73	4.60	5.06	5.73	6.27	6.57						
35	3.09	3.26	3.23	3.20	2.87	2.52	2.28	2.29	2.50	2.75	2.88	2.94						
40	1.54	1.63	1.62	1.66	1.51	1.35	1.28	1.35	1.43	1.50	1.50	1.51						
45	0.85	0.89	0.92	1.00	0.93	0.83	0.83	0.92	0.93	0.94	0.90	0.90						
50	0.51	0.52	0.55	0.67	0.65	0.56	0.57	0.62	0.61	0.61	0.59	0.60						
55	0.32	0.32	0.35	0.45	0.43	0.35	0.34	0.34	0.35	0.36	0.37	0.41						
60	0.17	0.18	0.18	0.23	0.19	0.14	0.11	0.11	0.11	0.12	0.15	0.19						
65	0.05	0.06	0.06	0.05	0.04	0.04	0.03	0.03	0.03	0.04	0.04	0.05						
70	0.02	0.02	0.02	0.02	0.01	0.01	0.01	0.01	0.00	0.01	0.01	0.02						
75	0.00	0.00	0.00	0.00	0.00	0.00	0.00	0.00	0.00	0.00	0.00	0.00						
80	0.00	0.00	0.00	0.00	0.00	0.00	0.00	0.00	0.00	0.00	0.00	0.00						
85	0.00	0.00	0.00	0.00	0.00	0.00	0.00	0.00	0.00	0.00	0.00	0.00						
90	0.00	0.00	0.00	0.00	0.00	0.00	0.00	0.00	0.00	0.00	0.00	0.00						
95	0.00	0.00	0.00	0.00	0.00	0.00	0.00	0.00	0.00	0.00	0.00	0.00						
100	0.00	0.00	0.00	0.00	0.00	0.00	0.00	0.00	0.00	0.00	0.00	0.00						
105	0.00	0.00	0.00	0.00	0.00	0.00	0.00	0.00	0.00	0.00	0.00	0.00						
110	0.00	0.00	0.00	0.00	0.00	0.00	0.00	0.00	0.00	0.00	0.00	0.00						
115	0.00	0.00	0.00	0.00	0.00	0.00	0.00	0.00	0.00	0.00	0.00	0.00						
120	0.00	0.00	0.00	0.00	0.00	0.00	0.00	0.00	0.00	0.00	0.00	0.00						
125	0.00	0.00	0.00	0.00	0.00	0.00	0.00	0.00	0.00	0.00	0.00	0.00						
130	0.00	0.00	0.00	0.00	0.00	0.00	0.00	0.00	0.00	0.00	0.00	0.00						
135	0.00	0.00	0.00	0.00	0.00	0.00	0.00	0.00	0.00	0.00	0.00	0.00						
140	0.00	0.00	0.00	0.00	0.00	0.00	0.00	0.00	0.00	0.00	0.00	0.00						
145	0.00	0.00	0.00	0.00	0.00	0.00	0.00	0.00	0.00	0.00	0.00	0.00						
150	0.00	0.00	0.00	0.00	0.00	0.00	0.00	0.00	0.00	0.00	0.00	0.00						
155	0.00	0.00	0.00	0.00	0.00	0.00	0.00	0.00	0.00	0.00	0.00	0.00						
160	0.00	0.00	0.00	0.00	0.00	0.00	0.00	0.00	0.00	0.00	0.00	0.00						
165	0.00	0.00	0.00	0.00	0.00	0.00	0.00	0.00	0.00	0.00	0.00	0.00						
170	0.00	0.00	0.00	0.00	0.00	0.00	0.00	0.00	0.00	0.00	0.00	0.00						
175	0.00	0.00	0.00	0.00	0.00	0.00	0.00	0.00	0.00	0.00	0.00	0.00						
180	0.00	0.00	0.00	0.00	0.00	0.00	0.00	0.00	0.00	0.00	0.00	0.00						

C Range: 0 - 360DEG
C Interval: 30.0DEG
Test Speed: MEDIUM
Temperature:25.3℃
Operators:zoe
Test Date:2025-7-15

Range: 0 - 180DEG
Interval: 0.5DEG
Test System:EVERFINE GO-SPEX500_V1 SYSTEM V2.00.461
Humidity:65.0%
Test Distance:3.160m [K=1.0000]
Remarks: LAMP:BXRE-30G-11H-3A1-00-0-0 Ra:90
LENS:HLTJ00039 15R
DRIVER: LS-3-700 SIE 700mA
30minutes warm-up